

Fitment	Part Number
Toyota Landcruiser 200 **	MRA59-A682
Toyota Landcruiser 105	MRA59-A685
Toyota Landcruiser 100	MRA59-A687
Toyota Landcruiser 80	MRA59-A885
Toyota Tundra 3 rd Gen	MRA59-A887

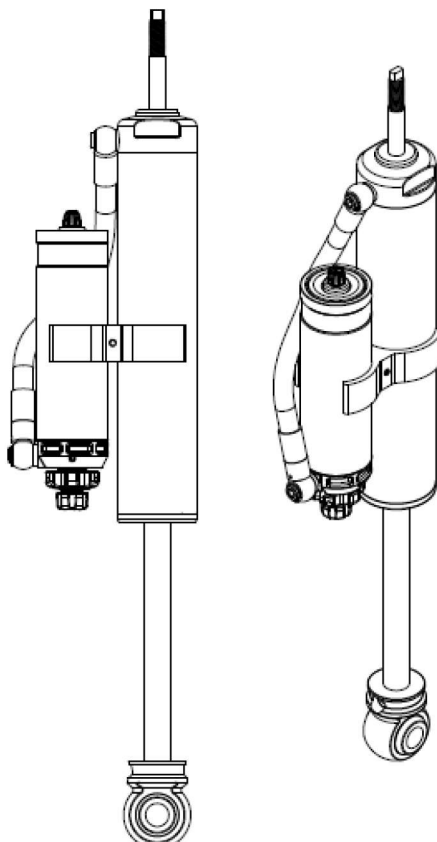
Anti-Twist Washer and Reservoir Install Instructions

NOTE – Installation is always recommended by a competent technician. Failure to properly install may result in reservoir fouling on components and voiding warranty.

**** LC200 KDSS models only. For Non-KDSS LC200 models, please use the bracket kit RM59-037.**

WARNING:

- Do not let gas out of shocks unless you have the ability to re-charge the shocks.
- Care must be taken to ensure the external oil reservoir does not foul on any components over the full travel.
- Operation outside of the working range may cause damage to the arm and could result in component failure, Warranty may also be voided.



Washer Sequence

200 Series Landcruiser Below – Use middle washer from packet in bottom picture. Use anti-twist washer in top picture.



Mount is between middle washers.



Washer Sequence

80/105 Series Landcruiser Below – Use anti-twist washer in top picture



Mount is between middle washers.



Fitting Anti-Spin Washers and Hose direction

200 Series Landcruiser – Chassis rail to top in picture. Hose to front of car.



Lower Bush and Washer Orientation

New Washer to the inside with the old washer to the outside. Put rebound adjuster to the inside to access easy.



Fitting Reservoir for optimal Positioning

NOTE: WHILE THIS IS THE OPTIMAL POSITION, OTHER FACTORS SUCH AS AFTERMARKET PARTS MAY AFFECT THIS POSITION AND SHOULD BE TAKEN INTO ACCOUNT WHEN FITTING. IT IS BEST TO CYCLE THE SUSPENSION THROUGH FULL MOTION AND CHECK THE RESERVOIR DOES NOT FOUL ON ANYTHING.

MRR 3 Way Adjustable Fitment

LC200 – KDSS Models

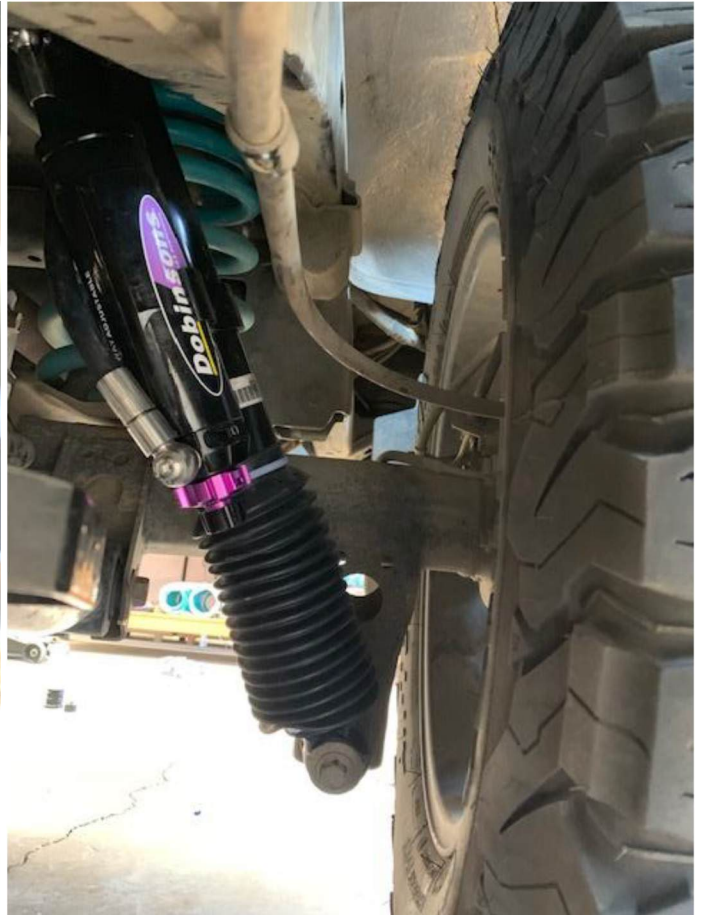
****For NON-KDSS model LC200 please use bracket kit RM59-037**

Reservoir positioned to be facing outer of the shock on wheel side.

RH SIDE

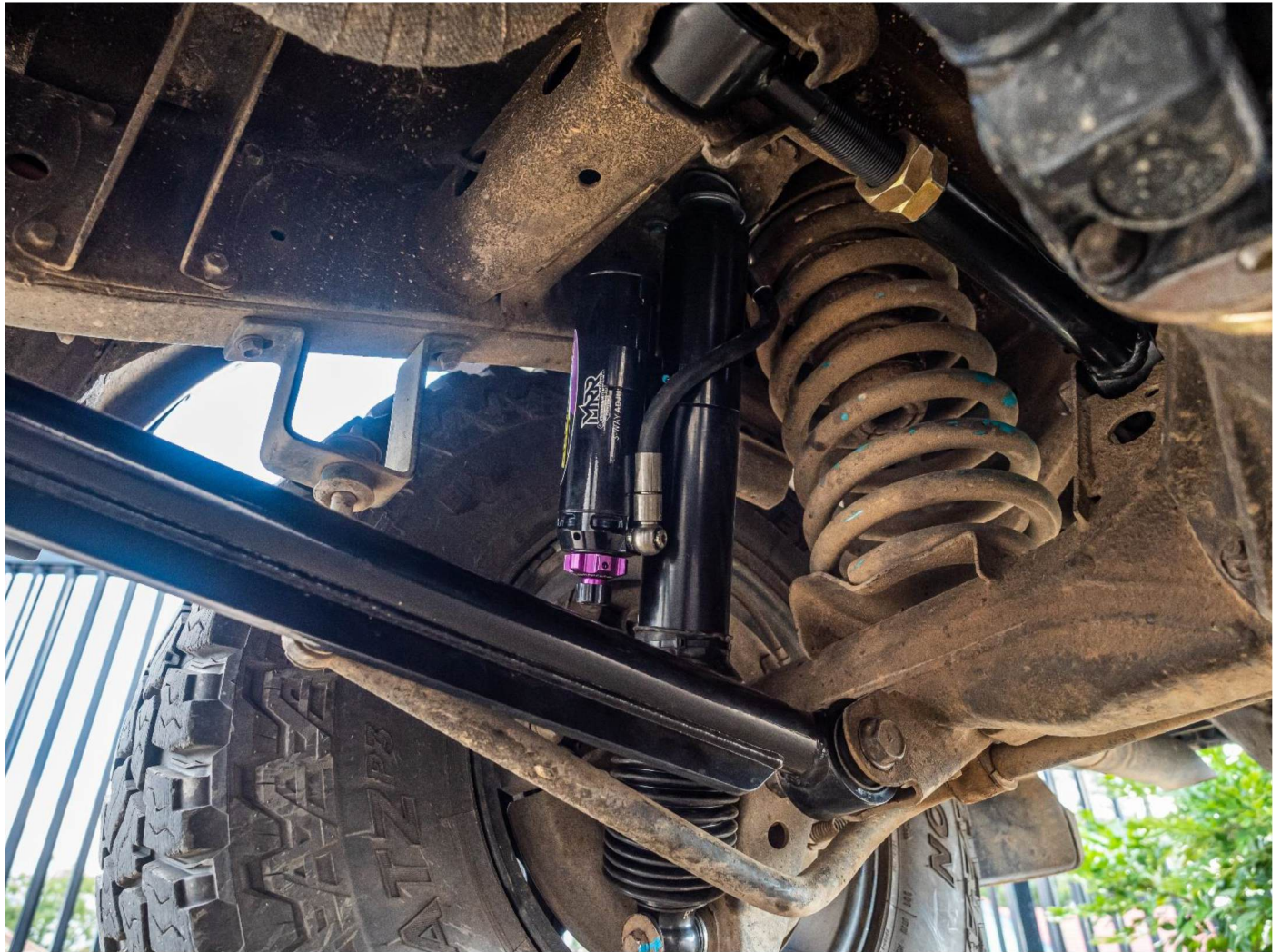


LH SIDE



80/105 Series Landcruiser

105 Series Pictured. Reservoir to front of car angled slightly towards the chassis rail. Hose to the front of car. The reservoir is orientated in the same position as LC200. Reservoir slightly angled towards the chassis rail. Hose to come out from rear side of shock and down. Make sure the reservoir and hose clears all arms on articulation.



Other fitting Notes

Make sure top nut is tight.

Please check the reservoir and the hose clear all arms etc on full travel up and down.

Place all stickers on the shock to outside of car for maximum visual effect.

Put on zipties to hold the dust cover in position.

Toyota Tundra 3rd Generation

Pictured. Reservoir to front of the car. Hose to the front of car. Hose to come out towards wheels and down as pictured. Use locating tab washer as per orientation above.



Toyota Tundra 3rd Generation

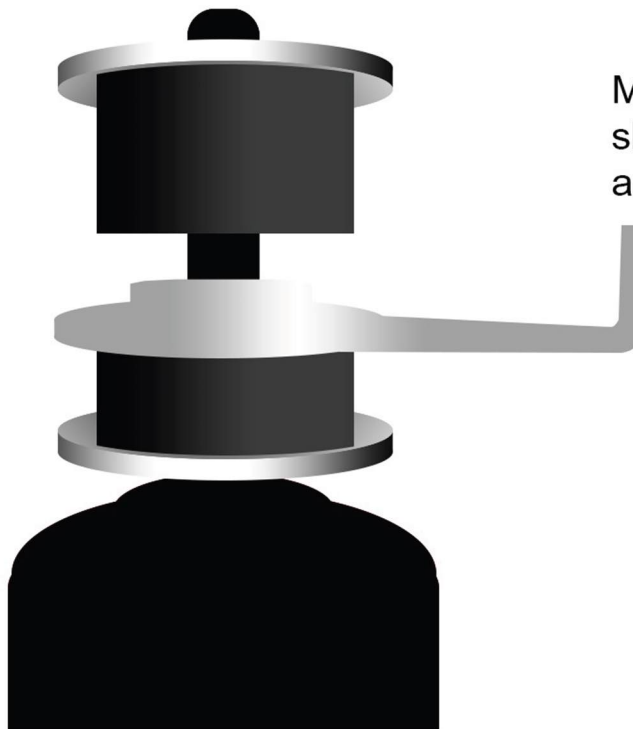
Flat Washer

Bushing

Locator Washer
(with holes)

Bushing
(with nipples)

Flat Washer



May need to be
slightly bent to fit
around shock mount