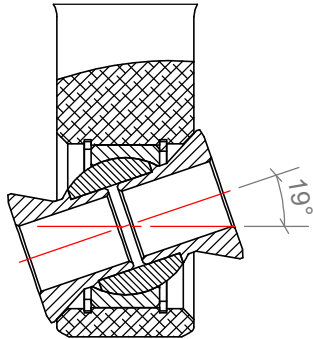
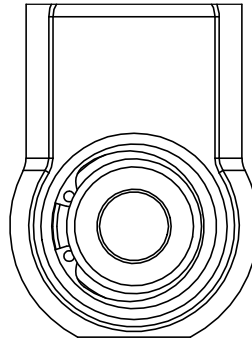


“IMPORTANT FITTING INSTRUCTION”

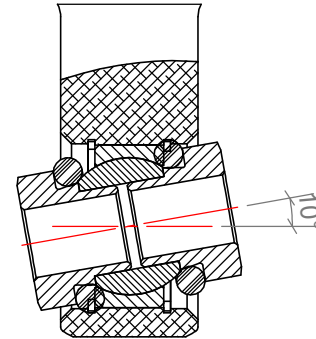
Bearings, Misalign Spacers and Mounts MUST NEVER BIND through full travel and articulation on both upper and lower mounts. Remove O-rings and Use high clearance misalign spacers for high angular travel applications. Binding of spacers, bearings or mounts will result in premature failure. Further Chamfering of bearing housing may be required if bind is still present with hi-angle spacers fitted.



HIGH ANGULAR TRAVEL
APPLICATIONS - O-RINGS
REMOVED, HI-ANGLE SPACERS
FITTED. MAX APPROX. 19°



ENSURE CIRCLIP OPENING IS
IN A HORIZONTAL POSITION
SO THAT IT DOESN'T NOT BIND
ON THE SPACERS



LOW ANGULAR TRAVEL
APPLICATIONS - STRAIGHT
MISALIGN SPACERS & O-RINGS
FITTED. MAX APPROX. 10°